

Food waste disposers are a hygienic and environmentally sustainable way to manage pre- and post-consumer scraps in a foodservice establishment. The SS Series disposers are ideal for heavy-duty applications such as restaurants, schools and universities, healthcare facilities and hospitals, and government facilities.

PRODUCT FEATURES & SPECIFICATIONS

3
YEAR
ON-SITE
PARTS & LABOR
WARRANTY

SS-SERIES

- Whether you serve 25 or 2,500 people, there is an InSinkErator disposer that's designed for your operation. From the small-capacity SS-100™ model to our large-capacity SS-1000™ workhorse, InSinkErator disposers deliver superior performance, quiet operation, maximum energy efficiency, and reliable service.

SYSTEM OVERVIEW

- Stainless steel and chrome-plated finish
- Corrosion-resistant, stainless steel grind chamber
- Heavy-duty induction motor with built-in thermal overload protection
- Enclosure provides protection against outside moisture with controlled power air flow to cool motor
- Cast-nickel, chrome-alloy stationary and rotating shredding elements
- Double-tapered Timken roller bearings provide a shock-absorbing cushion
- Triple lip seal protects motor from water damage
- Secondary spring-loaded oil seal provides double protection against water and loss of grease

CLEANING

- Disposers are easy to clean and maintain
- Wipe down exterior surfaces with a wet cloth
- Use warm soapy water on the splashguard



Commercial Disposer Sizing Chart

To determine the proper size disposer, use this recommended sizing chart. Sizing recommendations are given in general terms; actual capacities vary depending on the volume and type of food waste.

Volume Processed / Application	High Buffet/Cafeteria Government	SS-300	SS-300/ SS-500	SS-500	SS-500/ SS-1000	SS-500/ SS-1000
	Medium Full Service Restaurant	SS-200	SS-300	SS-300/ SS-500	SS-500	SS-500/ SS-1000
	Low Limited Service Restaurant/Café/ Fast Casual	SS-100	SS-200	SS-300	SS-300/ SS-500	SS-1000
		SS-100	SS-100	SS-200	SS-300	SS-300/ SS-500
		Light Up to 150 persons per meal	Medium Up to 300 persons per meal	Medium-Heavy Up to 500 persons per meal	Heavy More than 500 persons per meal	
		Food Waste Composition				

WHAT'S INCLUDED

- Food Waste Disposer, Mounting Assembly (either collar or bowl), 1 AquaSaver Control Box, 1 Syphon Breaker, 2 Solenoid Valves, and 2 Flow control Valves

MODEL & HORSEPOWER/ELECTRICAL REQUIREMENTS (CHOOSE ONE)

Small Capacity Disposers



SS-100
1 HP

208-230/460V, 60 Hz, 3 Ph, 2.0/2.4/1.2 amps

100/200-230V, 50/60 Hz, 1 Ph, 10.4/5.2/5.4 amps

Medium Capacity Disposer



SS-200
2 HP

208-230/460V, 60 Hz, 3 Ph, 3.6/4.4/2.2 amps

Large Capacity Disposers



SS-300
3 HP

208-230/460V, 60 Hz, 3 Ph, 6.0/7.4/3.7 amps

SS-500
5 HP

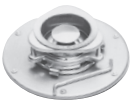
208-230/460V, 60 Hz, 3 Ph, 8.6/8.8/4.4 amps

SS-1000
10 HP

208-230/460V, 60 Hz, 3 Ph, 11.0/13.0/6.5 amps

DISPOSER MOUNTING ASSEMBLIES (CHOOSE ONE)

Sink Collar Mounts



- #5 Sink Flange Kit**
for 3-1/2"–4" (88.9 mm–101.6 mm) sink opening (support legs are recommended)
#5 adaptors only available with SS-100



- #7 Collar Adaptor Kit**
for welding into sink, for 6-5/8" (168.3 mm) opening, includes splash baffle and stopper

Sink Bowl Mounts

Bowl Size

- #12 (304.8 mm) with one adjustable water nozzle
#12 bowls only available with SS-100
- #18 (457.2 mm) with two adjustable water nozzles

Kit Type



- Sink Bowl Assembly**
- bowl
 - water nozzle(s)
 - bowl cover
 - silver guard
 - splash baffle

ELECTRICAL CONTROL

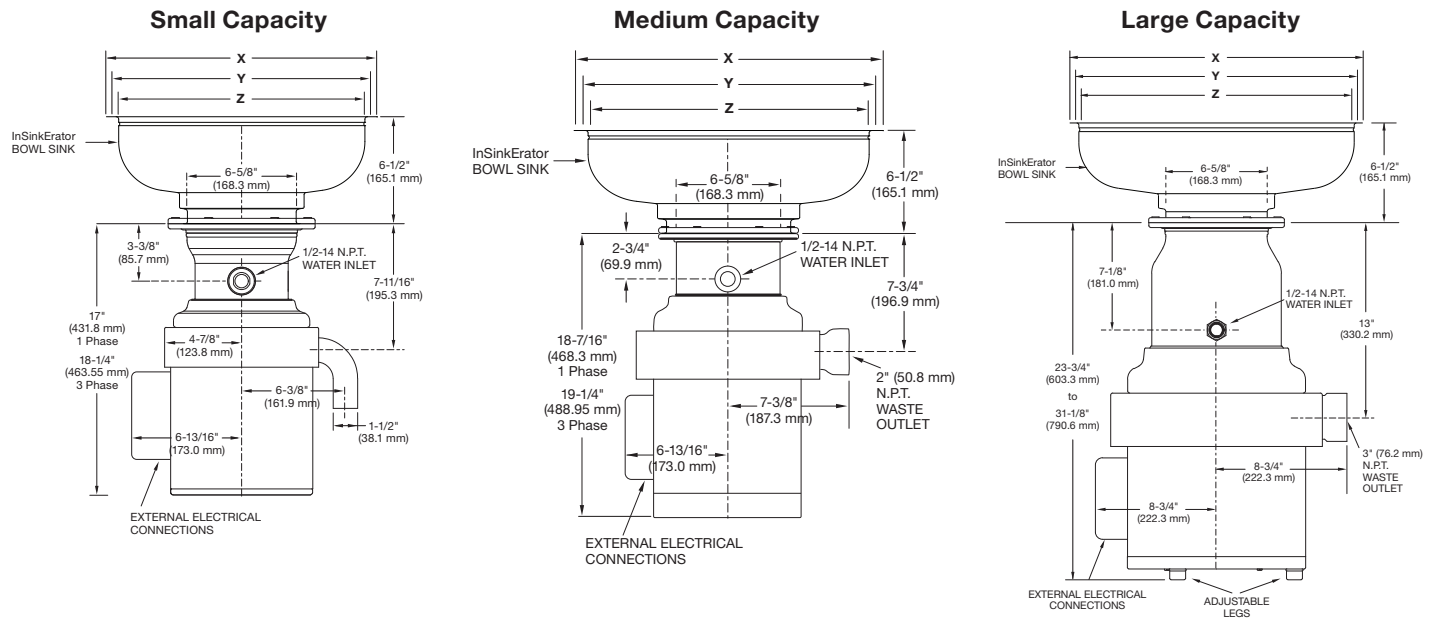
AS-101 Control Centre AquaSaver®



- Automatically changes direction
- Stainless-steel housing
- Automatic shut-off with power loss
- Line disconnect
- Programmable post-flush
- Timed run
- Automatically regulates water flow to grind load

DISPOSER DIMENSIONS

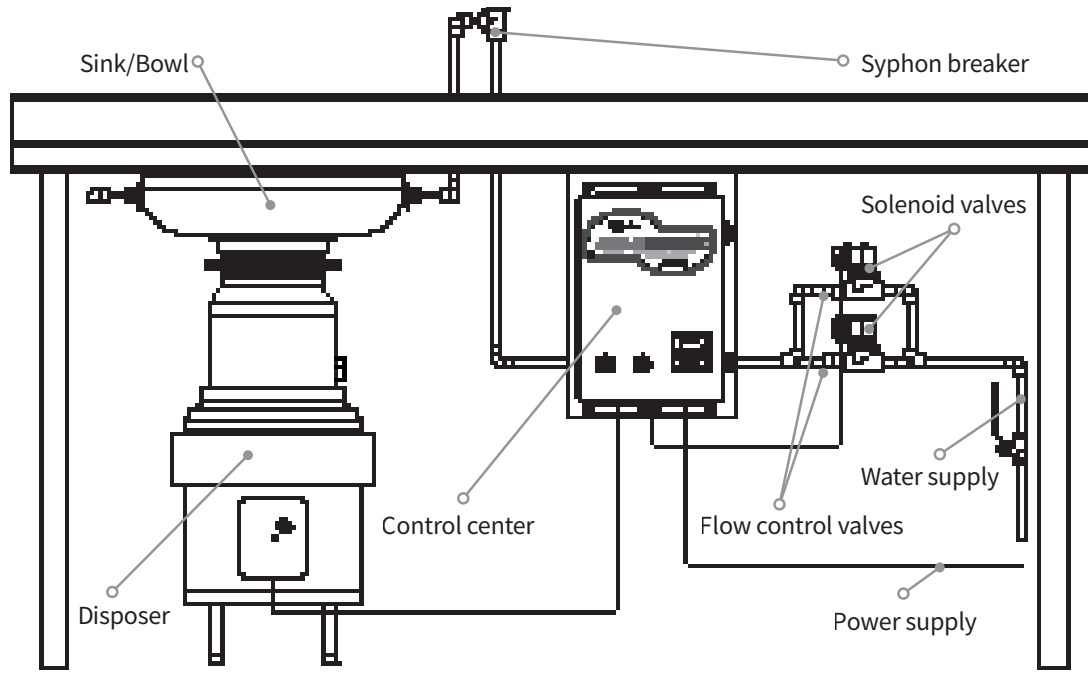
Standard models shown.



If mounting directly to a sink, use dimension chart below for adaptor height in place of InSinkErator bowl sink height.
IMPORTANT: #5 adaptors and #12 bowl only available with SS-100.

Bowl Mounts	Flange O.D. X	Work Table Hole Y	Flange I.D. Z	Height
#12 (304.8 mm)	13-1/2" (342.9 mm)	12-1/4" (311.2 mm)	12" (304.8 mm)	6-1/2" (165.1 mm)
#18 (457.2 mm)	19-1/2" (495.3 mm)	18-1/4" (463.6 mm)	18" (457.2 mm)	6-1/2" (165.1 mm)
Collar Mounts	X	Y	Z	Height
#5	Fits Standard Sink Opening: 3-1/2" – 4" (88.9 mm – 101.6 mm)			2-3/4" (69.9 mm)
#7	9-1/8" (231.8 mm)	7-7/8" (200.0 mm)	7-5/8" (193.7 mm)	2-1/16" (52.4 mm)

TYPICAL INSTALLATION



Aquasaver is to be installed 38.1mm back from the edge of the workstation bench to protect from water overflows.

REPLACING A COMPETITOR DISPOSER

- Refer to the Mounting Adaptor Guide for adaptors that fit competitor sink bowls or cones.
- Have sink bowl/cone type with appropriate dimensions available when contacting Customer Service with questions or to place an order.

CUSTOMER DETAILS

Company Name: _____

Trading Name (if applicable): _____

Company Address: _____

City/State/Postcode: _____

Company ABN: _____

Site Name: _____

Site Address: _____

City/State/Postcode: _____

Contact: _____

Phone: _____

Government / Defence

For Export

Total Value of the Quote: \$ _____

Customer Signature: _____

PRODUCT DETAILS

Replacement / New Installation: _____

Quantity: _____

Manufacturer: InSinkErator

Model Number: _____

Electrical Requirements: _____ HP _____ Phase

Collar / Bowl Requirement: _____

Contact: _____

Consultant Signature: _____