



KEEPING FOOD  
WASTE OUT OF  
LANDFILL SINCE 1938

# SS SERIES FOOD WASTE DISPOSERS

Food waste disposers are a hygienic and environmentally sustainable way to manage pre- and post-consumer scraps in a foodservice establishment. The SS Series disposers are ideal for heavy-duty applications such as restaurants, schools and universities, healthcare facilities and hospitals, and government facilities.

## PRODUCT FEATURES & SPECIFICATIONS

### SS-SERIES

- Whether you serve 25 or 2,500 people, there is an InSinkErator disposer that's designed for your operation. From the small-capacity SS-100™ model to our large-capacity SS-1000™ workhorse, InSinkErator disposers deliver superior performance, quiet operation, maximum energy efficiency, and reliable service.

### SYSTEM OVERVIEW

- Stainless steel and chrome-plated finish
- Corrosion-resistant, stainless steel grind chamber
- Heavy-duty induction motor with built-in thermal overload protection
- Enclosure provides protection against outside moisture with controlled power air flow to cool motor
- Cast-nickel, chrome-alloy stationary and rotating shredding elements
- Double-tapered Timken roller bearings provide a shock-absorbing cushion
- Triple lip seal protects motor from water damage
- Secondary spring-loaded oil seal provides double protection against water and loss of grease

### CLEANING

- Disposers are easy to clean and maintain
- Wipe down exterior surfaces with a wet cloth
- Use warm soapy water on the splashguard



**3**  
YEAR  
ON-SITE  
PARTS & LABOR  
WARRANTY

### Commercial Disposer Sizing Chart

To determine the proper size disposer, use this recommended sizing chart. Sizing recommendations are given in general terms; actual capacities vary depending on the volume and type of food waste.

Volume Processed / Application	High Buffet/Cafeteria Government	SS-300	SS-300/ SS-500	SS-500	SS-500/ SS-1000	SS-500/ SS-1000
	Medium Full Service Restaurant	SS-200	SS-300	SS-300/ SS-500	SS-500	SS-500/ SS-1000
	Low Limited Service Restaurant/Café/ Fast Casual	SS-100	SS-200	SS-300	SS-300/ SS-500	SS-1000
		SS-100	SS-100	SS-200	SS-300	SS-300/ SS-500
		<b>Light</b> Up to 150 persons per meal	<b>Medium</b> Up to 300 persons per meal	<b>Medium-Heavy</b> Up to 500 persons per meal	<b>Heavy</b> More than 500 persons per meal	
		<b>Food Waste Composition</b>				



471 Mountain Hwy  
Bayswater, VIC 3153  
TEL: 1300 136 205  
[insinkerator.com.au](http://insinkerator.com.au)



The Emerson logo is a trademark and a service mark of Emerson Electric Co.



## WHAT'S INCLUDED

- Food Waste Disposer, Mounting Assembly (either collar or bowl), 1 AquaSaver Control Box, 1 Syphon Breaker, 2 Solenoid Valves, and 2 Flow control Valves

## MODEL & HORSEPOWER/ELECTRICAL REQUIREMENTS (CHOOSE ONE)

### Small Capacity Disposers



**SS-100**  
1 HP

208-230/460V, 60 Hz, 3 Ph, 2.0/2.4/1.2 amps

100/200-230V, 50/60 Hz, 1 Ph, 10.4/5.2/5.4 amps

### Medium Capacity Disposer



**SS-200**  
2 HP

208-230/460V, 60 Hz, 3 Ph, 3.6/4.4/2.2 amps

### Large Capacity Disposers



**SS-300**  
3 HP

208-230/460V, 60 Hz, 3 Ph, 6.0/7.4/3.7 amps

**SS-500**  
5 HP

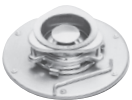
208-230/460V, 60 Hz, 3 Ph, 8.6/8.8/4.4 amps

**SS-1000**  
10 HP

208-230/460V, 60 Hz, 3 Ph, 11.0/13.0/6.5 amps

## DISPOSER MOUNTING ASSEMBLIES (CHOOSE ONE)

### Sink Collar Mounts



- #5 Sink Flange Kit**  
for 3-1/2"–4" (88.9 mm–101.6 mm) sink opening (support legs are recommended)  
*#5 adaptors only available with SS-100*



- #7 Collar Adaptor Kit**  
for welding into sink, for 6-5/8" (168.3 mm) opening, includes splash baffle and stopper

### Sink Bowl Mounts

#### Bowl Size

- #12 (304.8 mm) with one adjustable water nozzle  
*#12 bowls only available with SS-100*
- #18 (457.2 mm) with two adjustable water nozzles

#### Kit Type



- Sink Bowl Assembly**
- bowl
  - water nozzle(s)
  - bowl cover
  - silver guard
  - splash baffle

# ELECTRICAL CONTROL

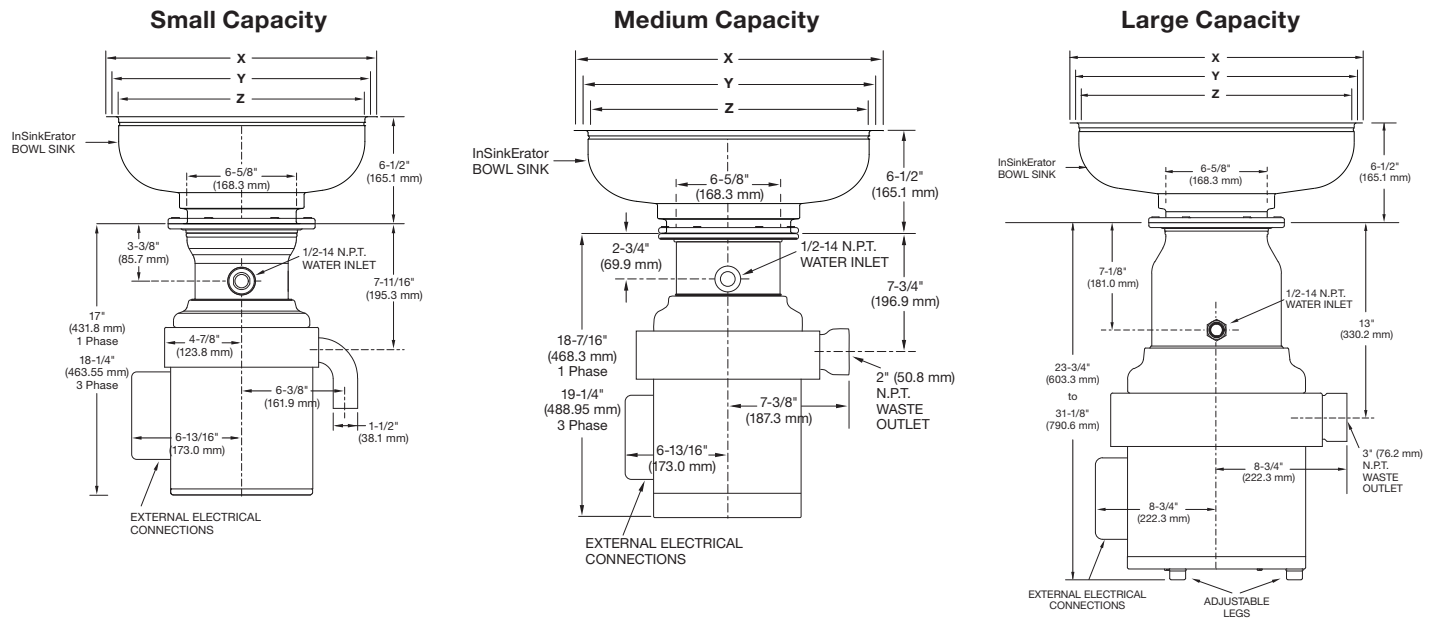
## AS-101 Control Centre AquaSaver®



- Automatically changes direction
- Stainless-steel housing
- Automatic shut-off with power loss
- Line disconnect
- Programmable post-flush
- Timed run
- Automatically regulates water flow to grind load

## DISPOSER DIMENSIONS

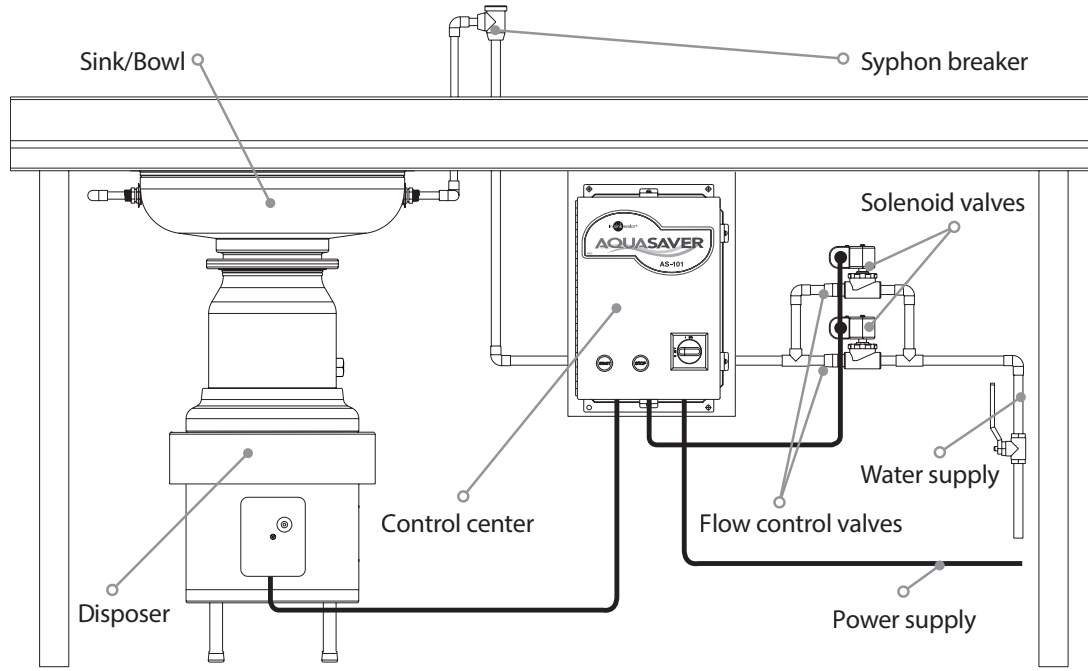
Standard models shown.



If mounting directly to a sink, use dimension chart below for adaptor height in place of InSinkEratOr bowl sink height.  
**IMPORTANT: #5 adaptors and #12 bowl only available with SS-100.**

Bowl Mounts	Flange O.D. X	Work Table Hole Y	Flange I.D. Z	Height
#12 (304.8 mm)	13-1/2" (342.9 mm)	12-1/4" (311.2 mm)	12" (304.8 mm)	6-1/2" (165.1 mm)
#18 (457.2 mm)	19-1/2" (495.3 mm)	18-1/4" (463.6 mm)	18" (457.2 mm)	6-1/2" (165.1 mm)
Collar Mounts	X	Y	Z	Height
#5	Fits Standard Sink Opening: 3-1/2" – 4" (88.9 mm – 101.6 mm)			2-3/4" (69.9 mm)
#7	9-1/8" (231.8 mm)	7-7/8" (200.0 mm)	7-5/8" (193.7 mm)	2-1/16" (52.4 mm)

## TYPICAL INSTALLATION



Aquasaver is to be installed 38.1mm back from the edge of the workstation bench to protect from water overflows.

## REPLACING A COMPETITOR DISPOSER

- Refer to the Mounting Adaptor Guide for adaptors that fit competitor sink bowls or cones.
- Have sink bowl/cone type with appropriate dimensions available when contacting Customer Service with questions or to place an order.

## CUSTOMER DETAILS

Company Name: \_\_\_\_\_

Trading Name (if applicable): \_\_\_\_\_

Company Address: \_\_\_\_\_

City/State/Postcode: \_\_\_\_\_

Company ABN: \_\_\_\_\_

Site Name: \_\_\_\_\_

Site Address: \_\_\_\_\_

City/State/Postcode: \_\_\_\_\_

Contact: \_\_\_\_\_

Phone: \_\_\_\_\_

Government / Defence

For Export

Total Value of the Quote: \$ \_\_\_\_\_

Customer Signature: \_\_\_\_\_

## PRODUCT DETAILS

Replacement / New Installation: \_\_\_\_\_

Quantity: \_\_\_\_\_

Manufacturer: InSinkErator

Model Number: \_\_\_\_\_

Electrical Requirements: \_\_\_\_\_ HP \_\_\_\_\_ Phase

Collar / Bowl Requirement: \_\_\_\_\_

Emerson Contact: \_\_\_\_\_

Emerson Consultant Signature: \_\_\_\_\_